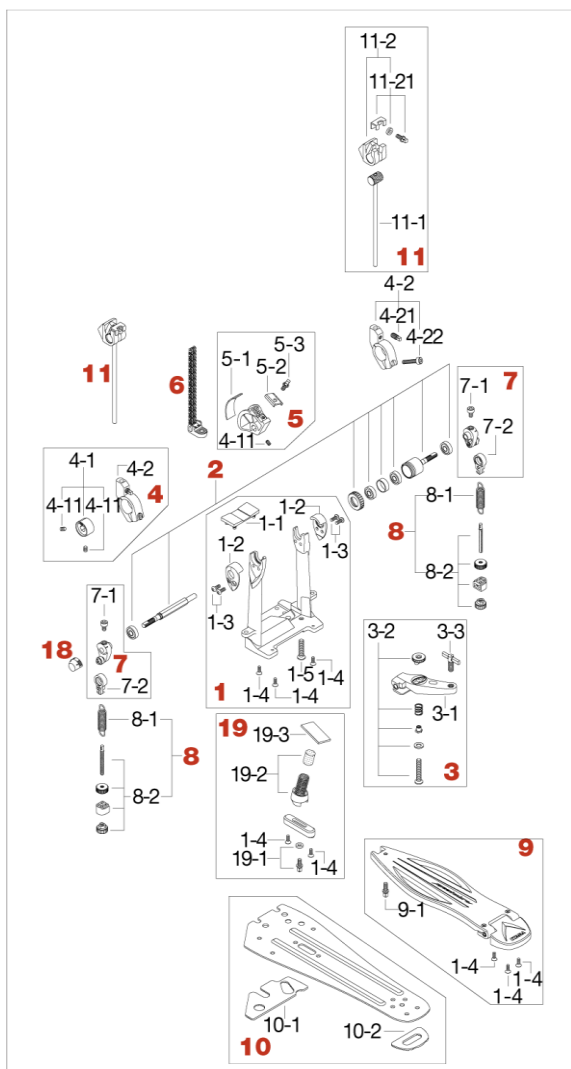


<Discontinued>

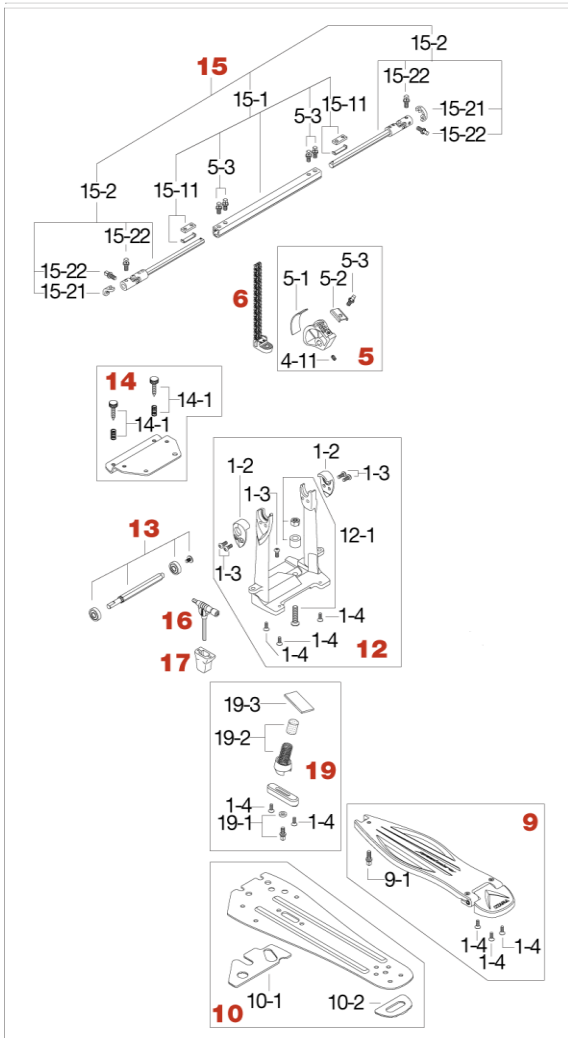
Production from Mar.2011 to Aug.2015



| No. | Model No. | Substitutable Model No. | Description |
|-------|--------------------------|-------------------------|---|
| 1 | HP91F | | Frame assembly |
| 1-1 | HP9-12 | | Rubber plate |
| 1-2 | HP91F3 | | Metal bearing cover (1pc) |
| 1-3 | B512NP | | Screw (M5x12mm, nickel, 2pcs/set) |
| 1-4 | S512 | | Screw (M5x12mm) |
| 1-5 | L835 | | Screw (M8x35mm) |
| 2 | HP9-3 (Discontinued) | HP9-3N | Para clamp II Pro assembly |
| 3 | HP9-31 (Discontinued) | HP9N31 | Clamp casting |
| 3-1 | HP9-32 | | Bolt (M8x47mm), spring, washer, spacer & nut assembly |
| 3-2 | WS820 (Discontinued) | WS826 | T-bolt (M8x26mm) |
| 3-3 | WS820 | | T-bolt (M8x20mm) |
| 4 | HP914 | | Vari-Pitch beater holder complete |
| 4-1 | HP9-41 | | Vari-Pitch beater holder center casting w/screws |
| 4-11 | S68 | | Screw (M6x8mm) |
| 4-2 | HP9142 | | Vari-Pitch beater holder outer casting w/screws |
| 4-21 | S812SH | | Square head bolt (M8x12mm) |
| 4-22 | L620C | | Screw (M6x20mm, Chrome) |
| 5 | HP915 | | LiteSproket Cam assembly |
| 5-1 | FP91 | | Felt pad |
| 5-2 | HP9152 | | Pressure plate |
| 5-3 | MS610SHP | | Square head bolt (M6x10mm, 2pcs/set) |
| 6 | HP916 | | Chain assembly |
| 7 | HP9S | | Speedo-Ring w/Quick Hook |
| 7-1 | L610 (Discontinued) | L612C | Screw (M6x12mm) |
| 7-2 | HP9-71 | | Quick Hook only |
| 8 | HP918 | | Spring assembly w/o Quick Hook |
| 8-1 | HP910-7S | | Spring only |
| 8-2 | HP900-77 | | Spring Tight assembly |
| 9 | HP919 | | Footboard w/screws |
| 9-1 | MS615SH | | Square head bolt (M6x15mm) |
| 10 | HP9110 | | Stabilizing plate complete |
| 10-1 | HP91102 | | Rubber plate for Speed Cobra pedal (front) |
| 10-2 | HP91103 | | Rubber plate for Speed Cobra pedal (rear) |
| 11 | PB90F (Discontinued) | N/A | Speed Cobra beater |
| 11-1 | PB911 | | Shaft only |
| 11-2 | PB90FH (Discontinued) | N/A | Beater head (felt) |
| 11-21 | PB91121 | | Bolt (M6x12mm), washer & metal hook assembly |

HP910LSWL Speed Cobra Twin Pedal (Lefty Model) <Discontinued>

Production from Mar.2011 to Aug.2015



| No. | Model No. | Substitutable Model No. | Description |
|-----------|-----------|-------------------------|---------------------------------------|
| 12 | HP91FR | | Frame assembly w/screw (right foot) |
| 12-1 | ACP90-1 | | Bolt (M8x35mm), spacer & nut assembly |
| 13 | HP912LN | | Shaft assembly |
| 14 | ACP910 | | Anchor plate assembly |
| 14-1 | 7114SP | | Screw anchor w/spring |
| 15 | CNR91 | | Connecting rod complete |
| 15-1 | CNR911 | | Connecting tube assembly |
| 15-11 | CNR90N11 | | Pressure pad set |
| 15-2 | CNR912 | | Inner rod assembly w/screws |
| 15-21 | CNR90-4 | | Bolt stopper |
| 15-22 | MS612SH | | Square head bolt (M6x12mm) |
| 16 | DH7 | | Drum Hammer |
| 17 | HH5 | | Hammer Holder |
| 18 | AMC2 | | Angle memory cap |
| 19 | CC900S | | Cobra Coil |
| 19-1 | MS612SHW | | Square head bolt (M6x12mm) w/washer |
| 19-2 | CC900S3 | | Cobra Coil spring assembly |
| 19-3 | FPCC | | Cobra Coil Felt for footboard |