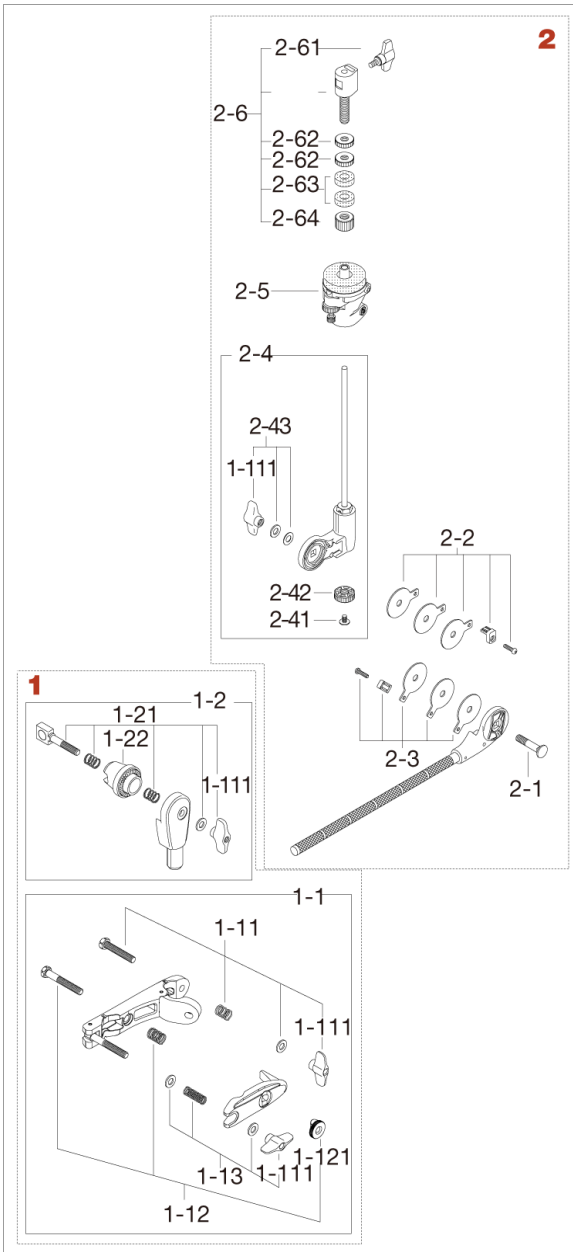


Closed Hi-Hat Attachment MXA73 <Discontinued>

Production from Nov. 2014 to Dec. 2016



No.	Model No.	Substitutable Model No.	Description
1	MC66		Universal clamp
1-1	MC61		Multi-clamp
1-11	HB845WN8T		Bolt w/ wing nut & spring
1-111	WN8P		Wing nut (M8, 2pcs/pack)
1-12	HB855RN8T		Bolt w/ nut & spring
1-121	RN8		Round nut (M8)
1-13	WN8SPW		Wing nut (M8) w/ spring & washers
1-2	MTA6		Boom tilter assembly
1-21	EBA8WN8T		Bolt, springs washer & nut assembly
1-22	EHZN2		Boom tilter casting
2	MXA73A		Closed hi-hat arm assembly
2-1	B840		Bolt (M8x40mm)
2-2	CT44-FPC		Friction plates (Chrome), plate and bolt assembly
2-3	CT44-FPB (Discontinued)	CT44-FPC	Friction plates (black), plate and bolt assembly
2-4	MXA73A1		Rod assembly
2-41	L508		Bolt (M5x8mm)
2-42	HTB5-15		Adjust nut only
2-43	WN8WTW		T-nut (M8), washer, belleville washer assembly
2-5	SB15N		Hi-hat bottom assembly
2-6	CL08		Hi-hat clutch
2-61	TS610		T-bolt (M6x10mm)
2-62	CL08-12		Lock nut (1pc)
2-63	CL08-13P		Felt washer (2pcs/pack)
2-64	CL08-14		Non-loose metal nut