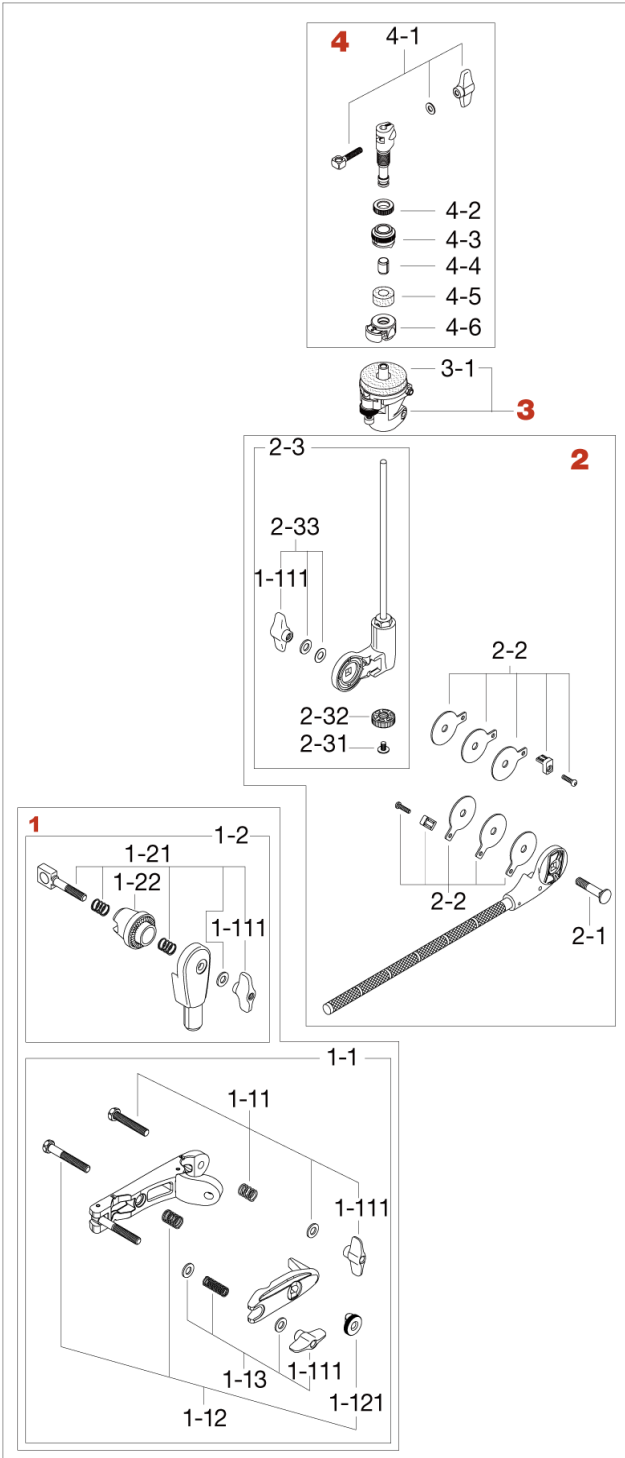


# Closed Hi-Hat Attachment MXA73N

Production from Jan. 2017



No.	Model No.	Description
<b>1</b>	MC66	Universal clamp
1-1	MC61	Multi-clamp
1-11	HB845WN8T	Bolt w/Wing nut & spring
1-111	WN8P	Wing nut (M8, 2pcs/pack)
1-12	HB855RN8T	Bolt w/nut & spring
1-121	RN8	Round nut (M8)
1-13	WN8SPW	Wing nut (M8) w/spring & washers
1-2	MTA6	Boom tilter assembly
1-21	EBA8WN8T	Bolt, springs washer & nut assembly
1-22	EHZN2	Boom tilter casting
<b>2</b>	MXA73NA	Closed hi-hat arm assembly
2-1	B840	Bolt (M8x40mm)
2-2	CT44-FPC	Friction plates (Chrome), plate and bolt assembly
2-3	MXA73NA1	Rod assembly
2-31	L508	Bolt (M5x8mm)
2-32	HTB5-15	Adjust nut only
2-33	WN8WTW	T-nut (M8), washer, belleville washer assembly
<b>3</b>	SB15N	Hi-hat bottom assembly
3-1	6815-21	Felt washer
<b>4</b>	QHC7	Quick-set Hi-hat clutch
4-1	EBA624WN	Eye bolt (M6 x24) & washer, T-nut assembly
4-2	QHC7LN	Lock nut (M14)
4-3	QHC7AN	Adjusting nut (M14)
4-4	CL08-13P	Felt washer (2pcs/pack)
4-5	SLC085	Collar
4-6	QHC7ST	Cymbal stopper