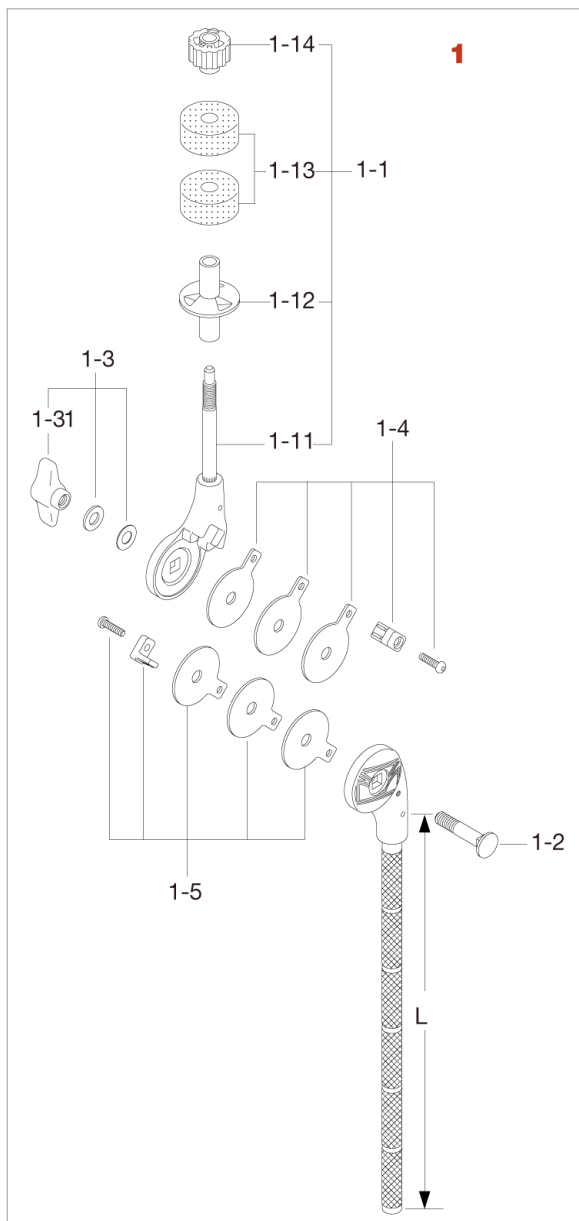


# Boom Arm MCB30EN / MCB45EN

Production from 2005 to Oct. 2009



No.	Model No.	Substitutable Model No.	Description
<b>1</b>	MCB30EN		<b>Boom Arm (L:300mm)</b>
<b>1</b>	MCB45EN		<b>Boom Arm (L:450mm)</b>
1-1	CT44N		Cymbal tilter assembly
1-11	CT44-11N		Cymbal tilter only
1-12	RB8P		Cymbal bottom (2pcs/pack)
1-13	7081P		Felt washer (2pcs/pack)
1-14	CM8P		Fixing nut (M8, 2pcs/pack)
1-2	B840		Bolt (M8x40mm)
1-3	WN8WTW		T-nut (M8), washer, thin washer assembly
1-31	WN8P		Wing nut (M8, 2pcs/pack)
1-4	CT44-FPC		Friction plates (Chrome), plate and bolt assembly
1-5	CT44-FPB (Discontinued)	CT44-FPC	Friction plates (Black), plate and bolt assembly