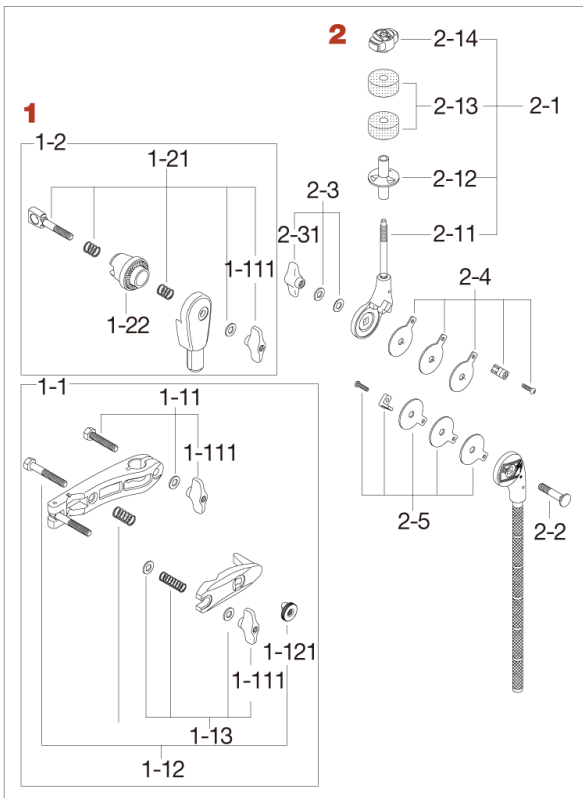


# Cymbal Attachment MCA63EN

Production from Nov. 2009 to Oct. 2014



No.	Model No.	Substitutable Model No.	Description
<b>1</b>	MC66		<b>Universal clamp</b>
1-1	MC61		Multi-clamp
1-11	HB840WN8		Bolt w/nut & washer
1-111	WN8P		Wing nut (M8, 2pcs/pack)
1-12	HB855RN8T		Bolt w/nut & spring
1-121	RN8		Round nut (M8)
1-13	WN8SPW		Wing nut (M8) w/spring & washers
1-2	MTA6		Boom tilter assembly
1-21	EBA8WN8T		Bolt, springs, washer & nut assembly
1-22	EHZN2		Boom tilter casting
<b>2</b>	MCB30EN		<b>Boom Arm</b>
2-1	CT44Q		Cymbal tilter assembly
2-11	CT44-11N		Cymbal tilter only
2-12	RB8P		Cymbal bottom (2pcs/pack)
2-13	7081P		Felt washer (2pcs/pack)
2-14	QC8		Quick set cymbal mate
2-2	B840		Bolt (M8x40mm)
2-3	WN8WTW		T-nut (M8), washer, thin washer assembly
2-31	WN8P		Wing nut (M8, 2pcs/pack)
2-4	CT44-FPC		Friction plates (Chrome), plate and bolt assembly
2-5	CT44-FPB (Discontinued)	CT44-FPC	Friction plates (Black), plate and bolt assembly