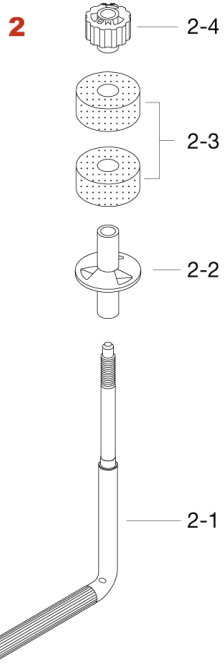


# Cymbal Stacker CSA25

Production from Nov. 2012



| No.      | Model No. | Description                          |
|----------|-----------|--------------------------------------|
| <b>1</b> | CSA25A    | <b>Cymbal Stacker Base w/Clamp</b>   |
| 1-1      | CSA251    | Cymbal Stacker Base Tube Only        |
| 1-11     | MS610SHP  | Square head bolt (M6x10mm), 2pcs/set |
| 1-2      | EHZN3     | Boom tilter casting                  |
| 1-3      | EBA8WN8T  | Bolt, spring, washer & nut assembly  |
| 1-31     | EBA846    | Eye bolt (M8x46mm)                   |
| 1-32     | WN8P      | Wing nut (2pcs/pack)                 |
| <b>2</b> | LCYE      | <b>Cymbal L-rod (M8)</b>             |
| 2-1      | LCYE-1    | L-rod for LCYE (M8)                  |
| 2-2      | RB8P      | Cymbal bottom (M8, 2pcs/pack)        |
| 2-3      | 7081P     | Felt washer (2pcs/pack)              |
| 2-4      | CM8P      | Cymbal Mate (M8 2pcs/set)            |

