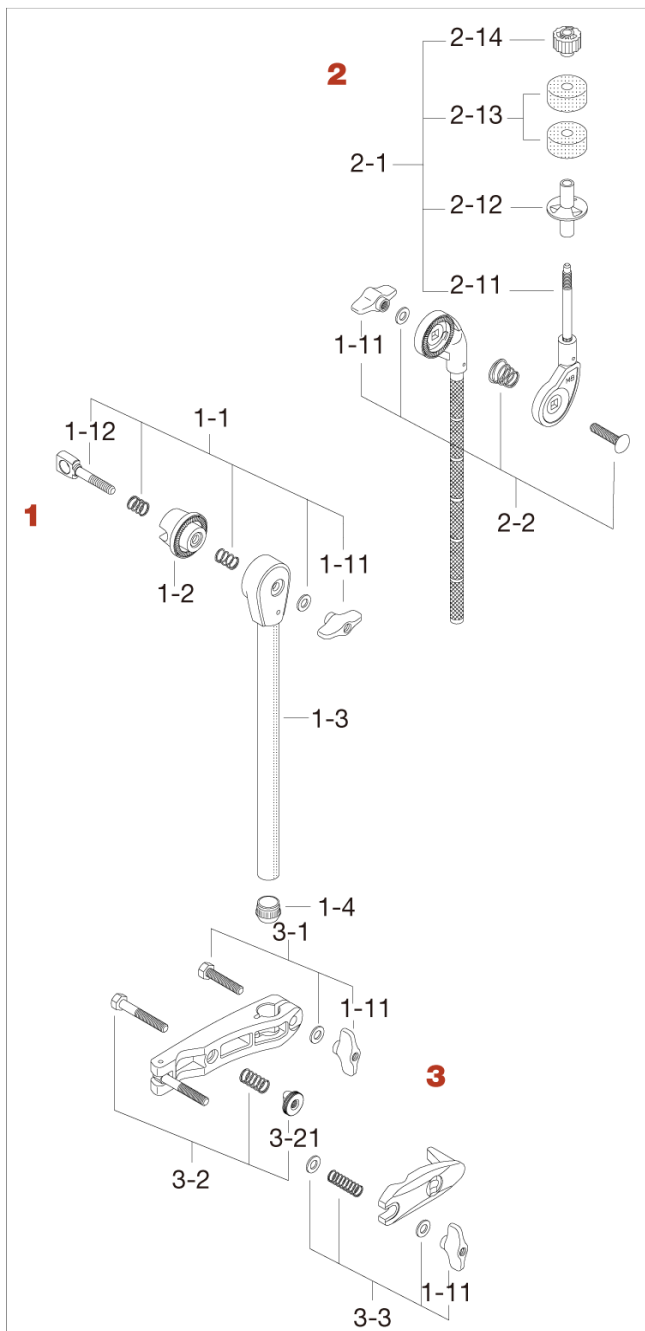


Cymbal Holder CCA30 <Discontinued>

Production from Nov. 2011 to Oct. 2014



No.	Model No.	Description
1	MTA30E	Ratchet arm
1-1	EBA8WN8T	Bolt, spring, washer & nut assembly
1-11	WN8P	Wing nut (2pcs/pack)
1-12	EBA846	Eye bolt (M8x46mm)
1-2	EHZN3	Boom tilter casting
1-3	MTA30E1	Ratchet arm only
1-4	IRC19S	Insert rubber cap (19.1mm)
2	MCB30EB	Boom Arm
2-1	CT44	Cymbal tilter assembly
2-11	CT44-11	Cymbal tilter only
2-12	RB8P	Cymbal bottom (M8, 2pcs/pack)
2-13	7081P	Felt washer (2pcs/pack)
2-14	CM8P	Cymbal mate (2pcs/pack)
2-2	B835WN8T	Bolt, spring, washer & nut assembly
3	MC61	Multi Clamp
3-1	HB840WN8	Bolt w/nut & washer
1-11	WN8P	Wing nut (2pcs/pack)
3-2	HB855RN8T	Bolt w/ nut & spring
3-21	RN8	Round nut (M8)
3-3	WN8SPW	Wing nut (M8) w/ spring & washers