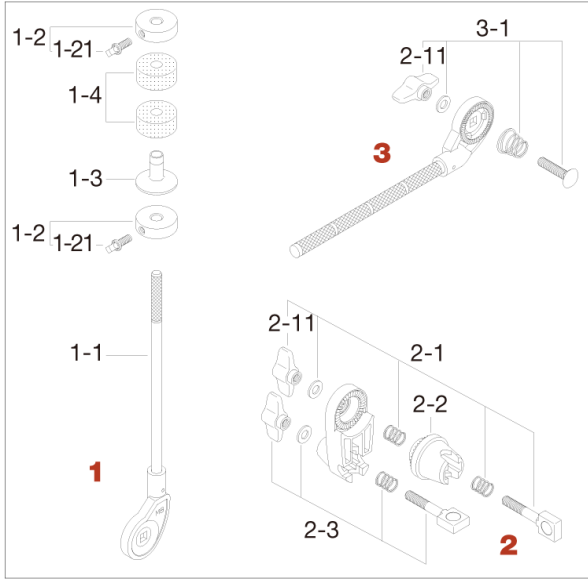


Cymbal Stacker CSA30E

Production from 2002 to 2005



No.	Model No.	Description
1	CSA30E-1	Tilter assembly
1-1	CSA30E-11	Tilter only
1-2	CSA30-12	Metal washer w/square head bolt
1-21	MS615SH	Square head bolt (M6x15mm)
1-3	CSA30-13	Cymbal bottom seat
1-4	7081P	Felt washers (2pcs/pack)
2	MC5	Compact clamp
2-1	EBA8WN8T	Bolt, springs, washer & nut assembly
2-11	WN8P	Wing nut (M8, 2pcs/pack)
2-2	EHZN2	Boom tilter casting
2-3	EBA8WN8W	Bolt, spring, washer & nut assembly
3	MCB20E-1	Upper rod assembly
3-1	B835WN8T	Bolt, spring, washer & nut assembly