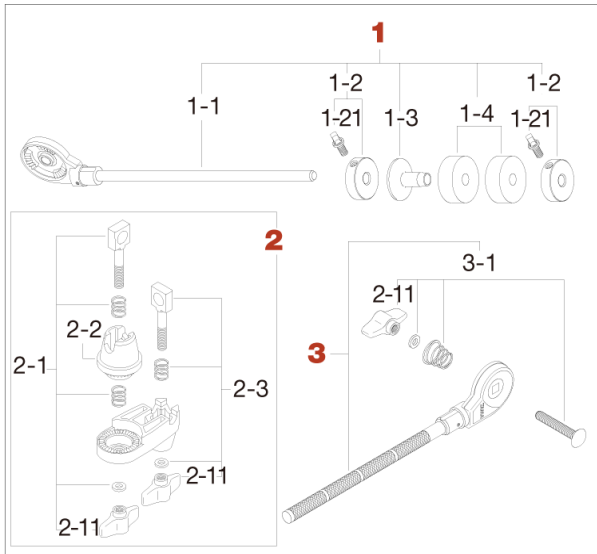


Cymbal Stacker CSA30E

Production until Dec. 2001



No.	Model No.	Description
1	CSA30-1	Rod assembly
1-1	CSA30-11	Cymbal rod only
1-2	CSA30-12	Metal washer w/ square head bolt
1-21	MS615SH	Square head bolt (M6x15mm)
1-3	CSA30-13	Cymbal bottom seat
1-4	7081P	Felt washer (2pcs/pack)
2	MC5	Compact-clamp
2-1	EBA8WN8T	Bolt, spring, washer & nut assembly
2-11	WN8P	Wing nut (M8, 2pcs/pack)
2-2	EHZN2	Boom tilter casting
2-3	EBA8WN8W	Bolt, spring washer & nut assembly
3	MCB20-1	Upper rod assembly
3-1	B835WN8T	Bolt, spring, washer & nut assembly