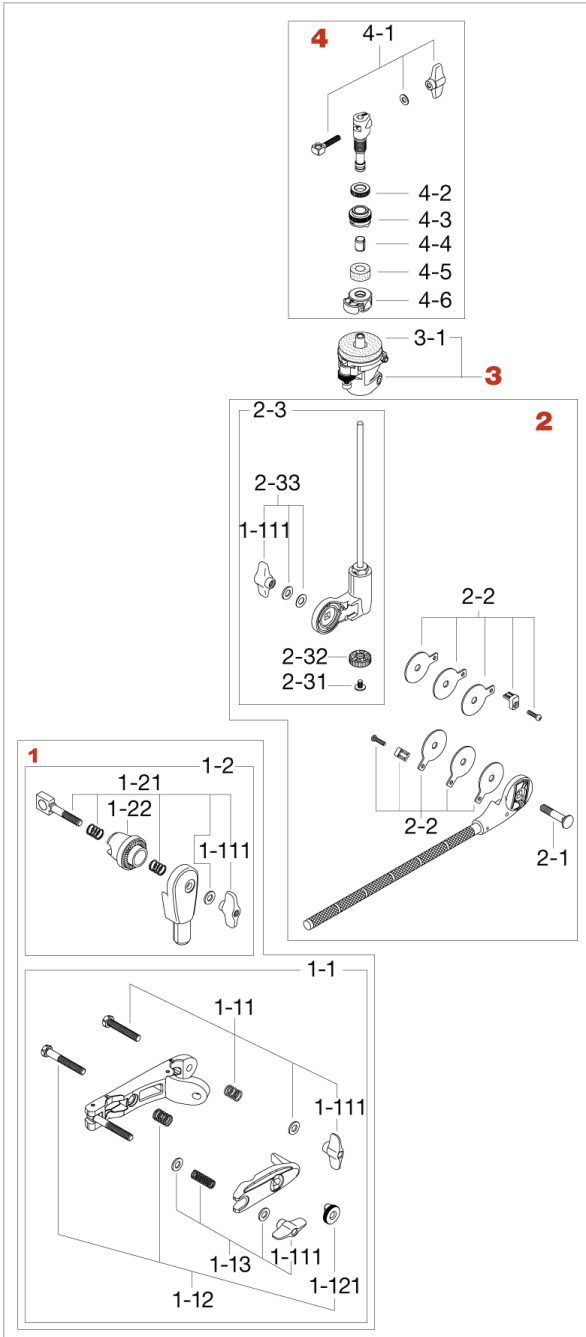


# Closed Hi-Hat Attachment MXA73N

Production since Jan. 2017



No.	Model No.	Description
<b>1</b>	MC66	<b>Universal clamp</b>
1-1	MC61	<b>Multi-clamp</b>
1-11	HB845WN8T	<b>Bolt w/Wing nut &amp; spring</b>
1-111	WN8P	<b>Wing nut (M8, 2pcs/pack)</b>
1-12	HB855RN8T	<b>Bolt w/nut &amp; spring</b>
1-121	RN8	<b>Round nut (M8)</b>
1-13	WN8SPW	<b>Wing nut (M8) w/spring &amp; washers</b>
1-2	MTA6	<b>Boom tilter assembly</b>
1-21	EBA8WN8T	<b>Bolt, springs washer &amp; nut assembly</b>
1-22	EHZN2	<b>Boom tilter casting</b>
<b>2</b>	MXA73NA	<b>Closed hi-hat arm assembly</b>
2-1	B840	<b>Bolt (M8x40mm)</b>
2-2	CT44-FPC	<b>Friction plates (Chrome), plate and bolt assembly</b>
2-3	MXA73NA1	<b>Rod assembly</b>
2-31	L508	<b>Bolt (M5x8mm)</b>
2-32	HTB5-15	<b>Adjust nut only</b>
2-33	WN8WTW	<b>T-nut (M8), washer, belleville washer assembly</b>
<b>3</b>	SB15N	<b>Hi-hat bottom assembly</b>
3-1	6815-21	<b>Felt washer</b>
<b>4</b>	QHC7	<b>Quick-set Hi-hat clutch</b>
4-1	EBA624WN	<b>Eye bolt (M6 x24) &amp; washer,T-nut assembly</b>
4-2	QHC7LN	<b>Lock nut (M14)</b>
4-3	QHC7AN	<b>Adjusting nut (M14)</b>
4-4	CL08-13P	<b>Felt washer (2pcs/pack)</b>
4-5	SLC085	<b>Collar</b>
4-6	QHC7ST	<b>Cymbal stopper</b>