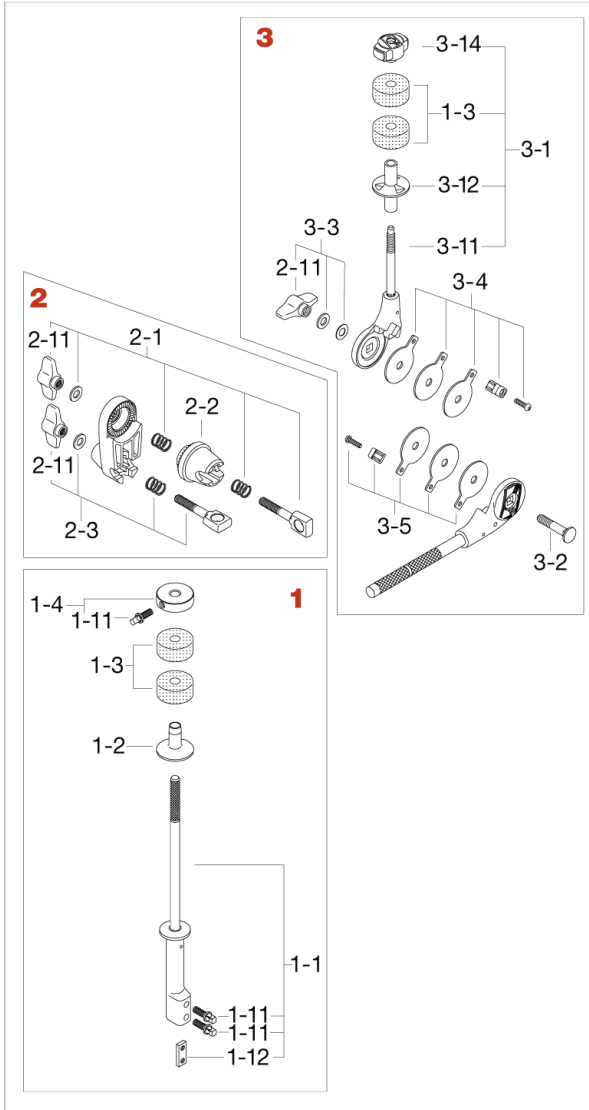


Cymbal Stacker CSA35N

Production since 2009



No.	Model No.	Description
1	CSA351	Cymbal Stacker Base Tube
1-1	CSA3511	Cymbal stacker base tube only
1-11	MS615SH	Square head bolt (M6x15mm)
1-12	CNR90-5	Pressure pad
1-2	CSA30-13	Cymbal bottom seat
1-3	7081P	Felt washer (2pcs/pack)
1-4	CSA30-12	Metal washer w/square head bolt
2	MC5	Compact clamp
2-1	EBA8WN8T	Bolt, springs, washer & nut assembly
2-11	WN8P	Wing nut (M8, 2pcs/pack)
2-2	EHZN2	Boom tilter casting
2-3	EBA8WN8W	Bolt, spring, washer & nut assembly
3	MCB15EN	Cymbal Boom Arm
3-1	CT44Q	Cymbal tilter assembly
3-11	CT44-11N	Cymbal tilter only
3-12	RB8P	Cymbal bottom (2pcs/pack)
3-14	QC8	Quick-set cymbal mate
3-2	B840	Bolt (M8x40mm)
3-3	WN8WTW	T-nut (M8), washer, belleville washer assembly
3-4	CT44-FPC	Friction plates (Chrome), plate and bolt assembly
3-5	CT44-FPB	Friction plates (black), plate and bolt assembly