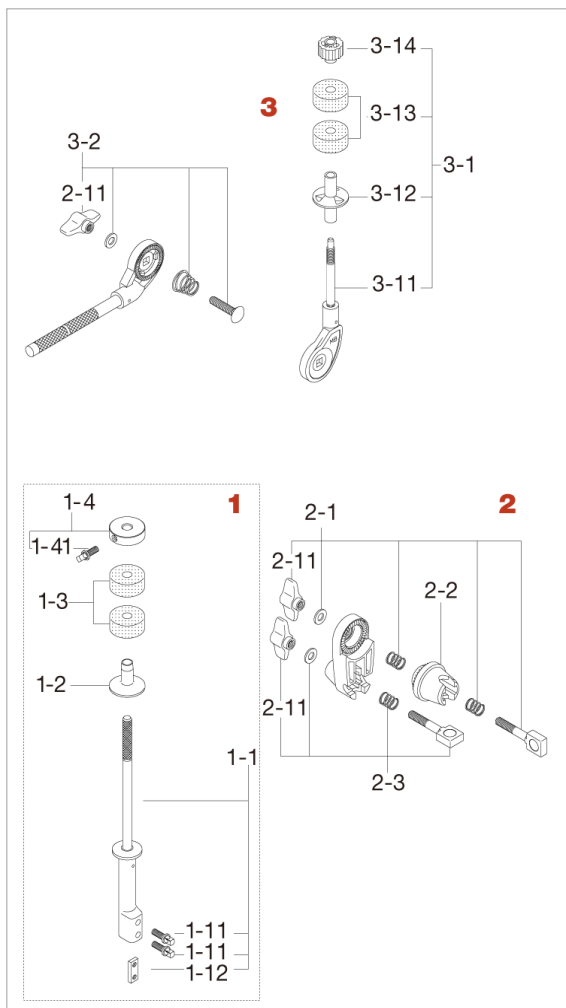


Cymbal Stacker CSA35 <Discontinued>

Production from Aug. 2005 to Oct. 2009



No.	Model No.	Substitutable Model No.	Description
1	CSA351		Cymbal Stacker Base Tube
1-1	CSA3511		Cymbal stacker base tube only
1-11	MS615SH		Square head bolt (M6x15mm)
1-12	CNR90-5		Pressure pad
1-2	CSA30-13		Cymbal bottom seat
1-3	7081P		Felt washer (2pcs/pack)
1-4	CSA30-12		Metal washer w/square head bolt
1-41	MS615SH		Square head bolt (M6x15mm)
2	MC5 (Discontinued)	MC5B	Compact clamp
2-1	EBA8WN8T		Bolt, springs, washer & nut assembly
2-11	WN8P		Wing nut (M8, 2pcs/pack)
2-2	EHZN2		Boom tilter casting
2-3	EBA8WN8W		Bolt, spring, washer & nut assembly
3	MCB15EN (Discontinued)	N/A	Cymbal Boom Arm
3-1	CT44		Cymbal tilter assembly
3-11	CT44-11		Cymbal tilter only
3-12	RB8P		Cymbal bottom (2pcs/pack)
3-13	7081P		Felt washer (2pcs/pack)
3-14	CM8P		Fixing nut (M8, 2pcs/pack)
3-2	B835WN8T		Bolt (M8x35mm), spring, washer & nut assembly