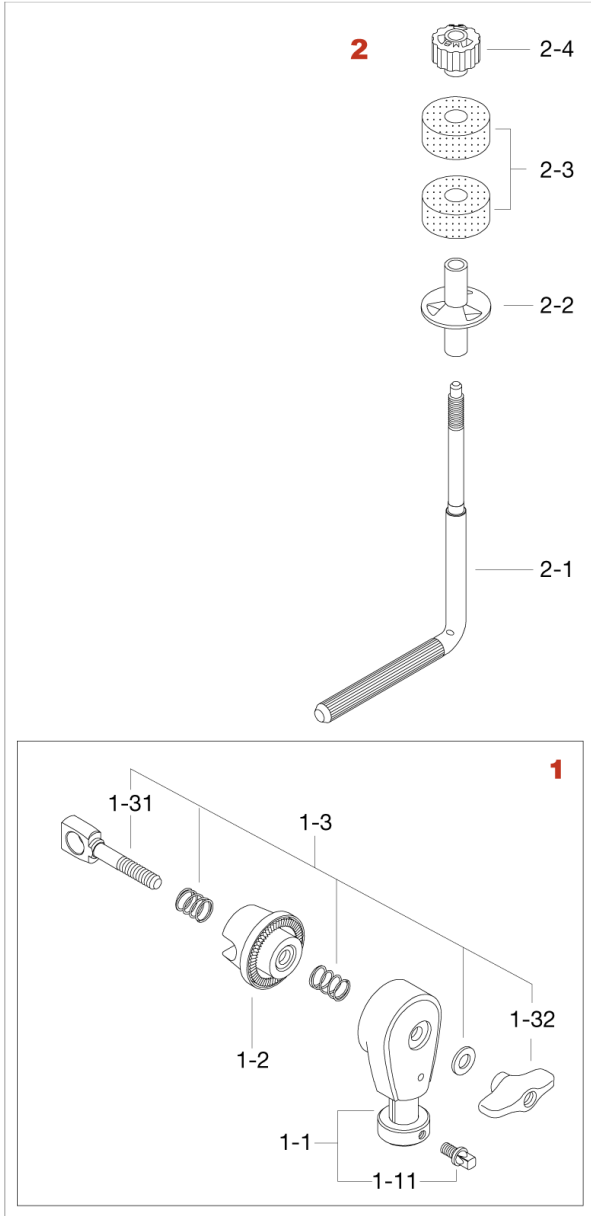


Cymbal Stacker CSA25

Production since Nov. 2012



No.	Model No.	Description
1	CSA25A	Cymbal Stacker Base W/Clamp
1-1	CSA251	Cymbal Stacker Base Tube Only
1-11	MS610SHP	Square head bolt (M6x10mm), 2pcs/set
1-2	EHZN3	Boom tilter casting
1-3	EBA8WN8T	Bolt, spring, washer & nut assembly
1-31	EBA846	Eye bolt (M8x46mm)
1-32	WN8P	Wing nut (2pcs/pack)
2	LCYE	Cymbal L-rod (M8)
2-1	LCYE-1	L-rod for LCYE (M8)
2-2	RB8P	Cymbal bottom (M8, 2pcs/pack)
2-3	7081P	Felt washer (2pcs/pack)